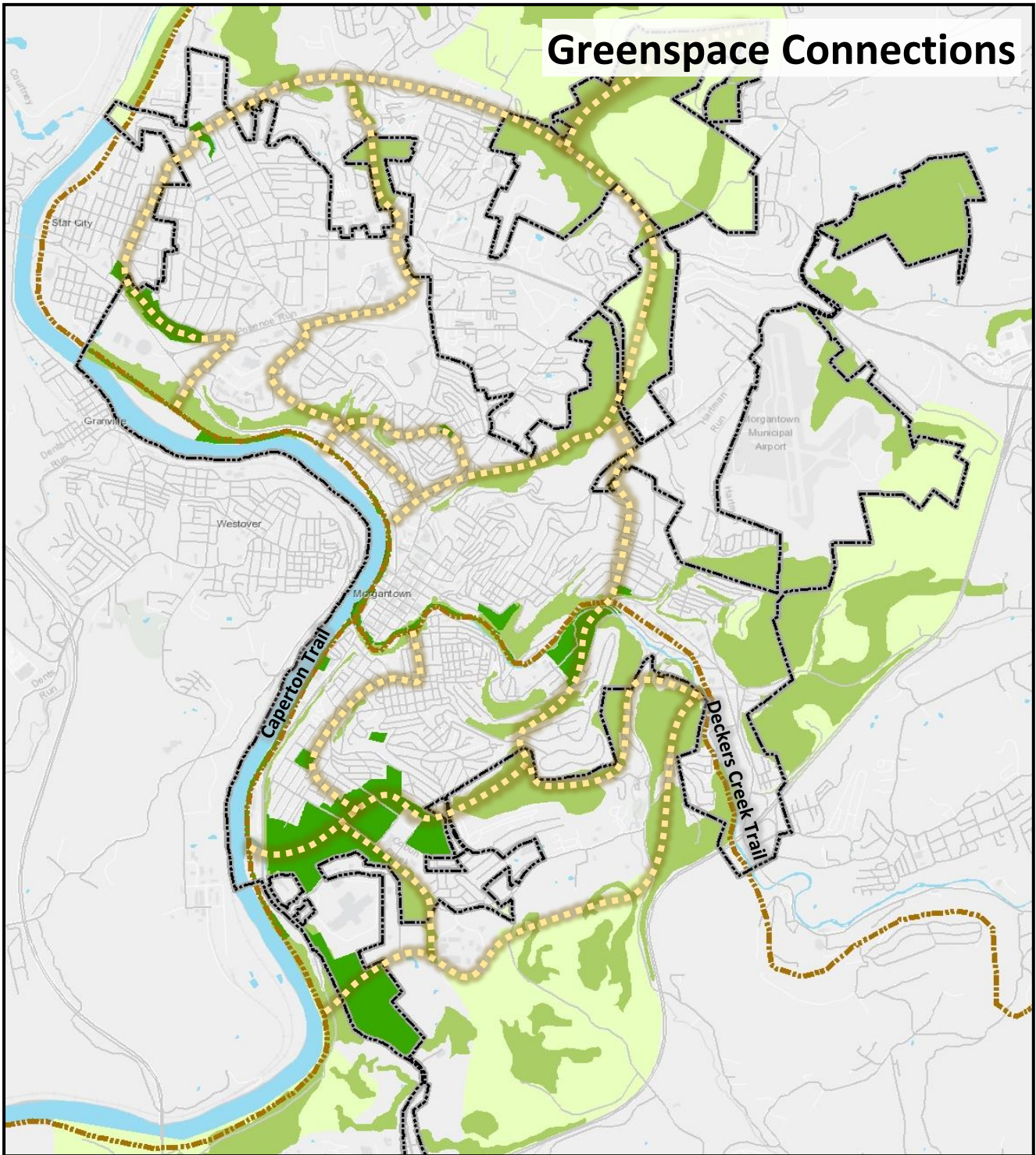


Greenspace Connections



2013 Comprehensive Plan General Land Management Conservation Concept Areas

CONSERVATION (MAINTAIN AND PROTECT)



Preserve: Land that is permanently protected by regulations or ownership such as nature preserves, recreational open space and public parks.



Reserve: Undeveloped land with significant environmental constraints (steep slopes, floodplain, mature forest) or farmland that is likely to remain as open space or an agricultural use. These areas may be subject to development and should be considered for preservation.



Neighborhood Conservation*: Preservation of existing neighborhood character and maintenance of buildings and infrastructure.



Limited Growth / Conservation Development: Primarily rural areas that have value as open space but are subject to development. To the extent that development occurs, it should be clustered to retain open space and protect significant environmental features.

Not Shown